

# Managing open access in the library

## UKSG Open access: an introduction

Wendy White , Head of Scholarly Communication

University of Southampton

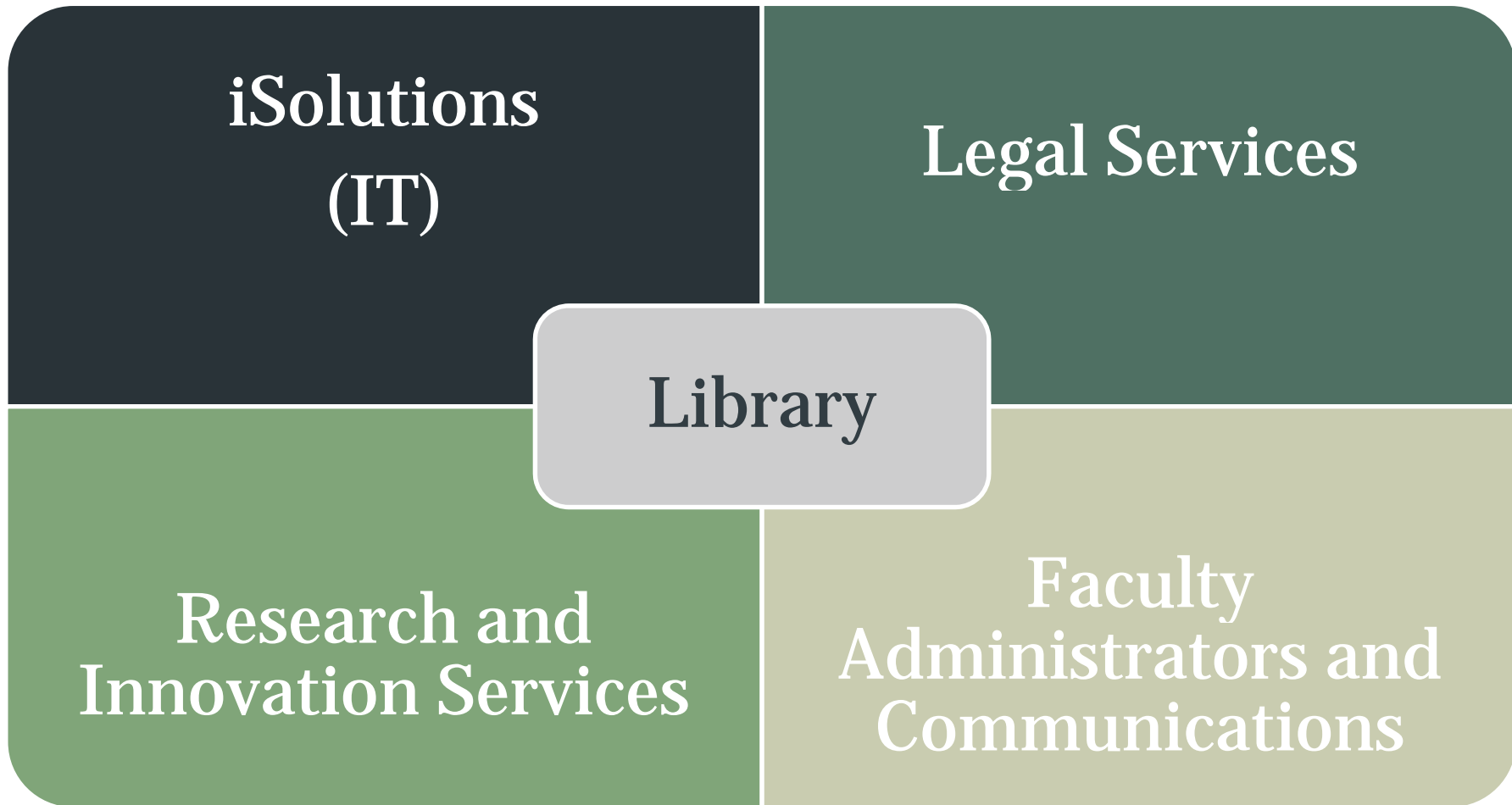
23 May 2012

# Governance and policies

## Decisions and discussions

- Repository designated a core corporate system like HR, Finance and Student Records
- Has its own Systems Board reporting to University Systems Board which has governance for resource allocation
- University Research and Enterprise Group advises the PVC Research on policy
- Other relevant fora for discussions e.g. REF Planning Group, Faculty committees
- Most institutions have links to one or more of these routes

# Service partnership network



# Requirements and encouragements

- Requirement to deposit post-prints of journal articles and conference proceedings where this is permitted by the publisher
- Emphasis on author involvement and encouragement over compliance
- Encouragement to deposit many other forms of research output and pre-prints where this does not jeopardise publication
- Focus on benefits to authors and trusted approaches

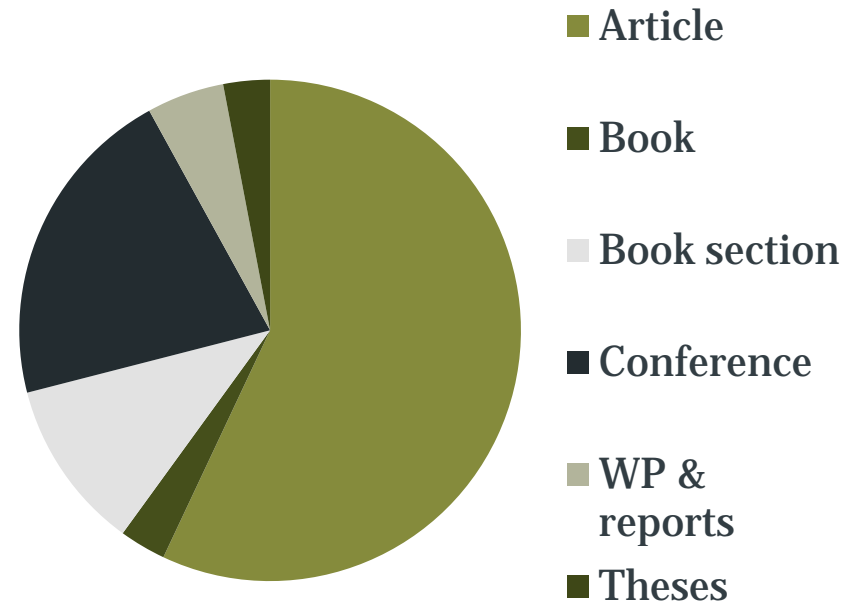
# Content and usage

# Content coverage

## open access



## metadata



Other does include 114 OA books, 92 art items and some datasets  
Around 6000 OA articles and over 6000 OA conferences

## Downloads and uploads

- 93484 downloads a month
- Google analytics
- IR Stats service
- RSS feeds, twitter, alerts
- Looking at integration with library search
- 843 deposits a month running at about 20% with OA access
- Even flow of uploads
- Top 5 countries this month UK, US, India, China, Germany



# Adding value and support

# Tools as part of researcher's workflow and publication lifecycle

Import/export functions – xml, reference managers, DOI, other services like PubMed, ArXiv and Web of Knowledge

Not just about “final publication” - store early drafts to share with co-authors, public preprints and postprints, request a copy facility

Not just about “text” – describe and display art and music

More use of institutional repositories for data as push for open data gathers momentum e.g. JISC funded DataPool (Soton), KAPTUR (VADS) and Essex RDR



Start a new search

Enter terms

Search

### Browse Results

Search Browse Search History Marked List Result

Displaying records 1 - 15 of 1396 on page 1 of 94.

1 2 3 4 5 6 Next » Last page »

Add to marked list

| Mark                     | Title ▲   | Author               | Year | University                                |
|--------------------------|---|----------------------|------|---|
| <input type="checkbox"/> | <a href="#">"Fit objects for an asylum": The Hampshire County Lunatic Asylum and its patients, 1852-1899</a>  | Burt, Susan Margaret | 2003 | <a href="#">University of Southampton</a> |
| <input type="checkbox"/> | <a href="#">"No change in a new era?" The impact of the Education Reform Act (1988) on the provision of physical education and sport in state schools</a> | Penney, Dawn         | 1994 | <a href="#">University of Southampton</a> |
| <input type="checkbox"/> | <a href="#">3-D Content-Based Retrieval and Classification with Applications to Museum Data</a>   | Goodall, Simon       | 2007 | <a href="#">University of Southampton</a> |
| <input type="checkbox"/> | <a href="#">A chirped, pulsed laser system and magneto-optical trap for rubidium</a>  | Patel, Sunil         | 2009 | <a href="#">University of Southampton</a> |
| <input type="checkbox"/> | <a href="#">A combined numerical and experimental study of aerofoil separation bubbles</a>  | Morin, Sandrine      | 2003 | <a href="#">University of Southampton</a> |
| <input type="checkbox"/> | <a href="#">A comparison of subjective and objective methods of analysis of the vegetation of Hartland Moor</a>   | Hunt, Peter F.       | 1959 | <a href="#">University of Southampton</a> |
| <input type="checkbox"/> | <a href="#">A competency model for semi-automatic question generation in adaptive assessment</a>  | Sitthisak, Onjira    | 2009 | <a href="#">University of Southampton</a> |
| <input type="checkbox"/> | <a href="#">A Comprehensive Scheme for Reconfigurable Energy-Aware Wireless Sensor Nodes</a>  | Weddell, Alex        | 2010 | <a href="#">University of Southampton</a> |
| <input type="checkbox"/> | <a href="#">A comprehensive scheme for reconfigurable</a>   | Weddell              | 2010 | <a href="#">University of</a>             |

# Added value through developing expertise

Guidance on copyright, licences and versions from editorial team

Quality assurance to ensure accurate metadata to maximise exposure, harvesting, presentation on websites

Dedicated editorial team but important issue linking to many library roles e.g. liaison staff, loans, digitisation lab

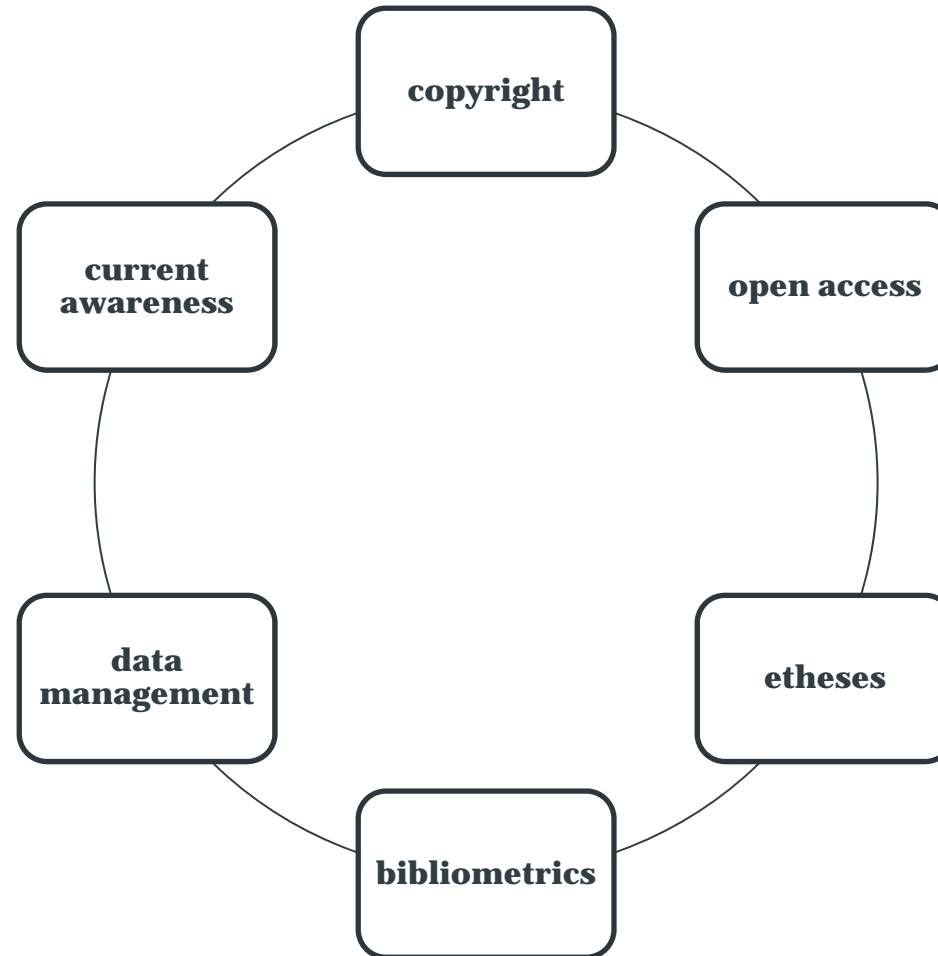
Engage with researchers to discuss international developments e.g. SOPA, Research Works Act, draft RCUK policy, Finch review, PEER project

# Training and guidance

# Individual and group support

- Workshops integrated into Graduate Centre for PGRs and Professional Development Unit
- Bespoke sessions for Departmental Seminars
- Can cover issues relevant to research and teaching
- Not just use of repositories but broad context of open access
- Deskside one-to-one support, on screen guides, dedicated enquiry service
- Start up service for new staff

# Embedded and bespoke workshops

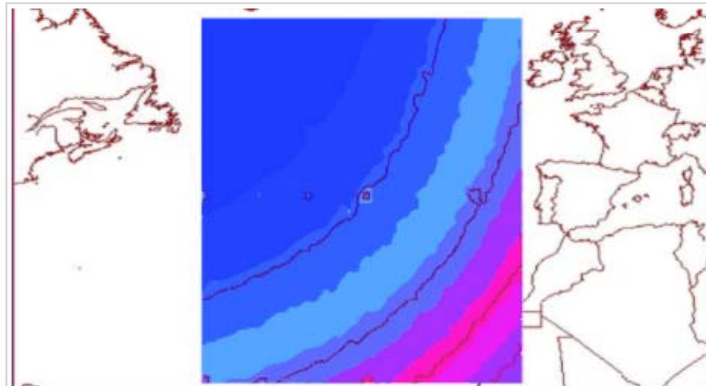


# Hosting publications



# Hosting content – working papers, reports, theses

## Southampton Statistical Sciences Research Institute (S3RI)



The Institute brings together staff from across the University for research in methods and applications of Statistics

### Latest news

#### Southampton plays host to national conference

This year's national Research Students Conference (RSC) in Probability and Statistics is being held at the University of Southampton.

#### S3RI Special Seminar 19 Jan 2012

The next S3RI Special Seminar will be given by Peter Diggle (Lancaster University), will be titled "Model-based geostatistics for tropical disease epidemiology". The seminar will take place on Thursday 19 January 2012 at

### Contact us

For further information please [contact us](#)

### Seminars

### Working papers

#### [Optimal Designs for Indirect Regression](#)

Stefanie Biedermann, Nicolai Bissantz, Holger Dette, Edmund Jones

#### [Screening Strategies In The Presence Of Interactions](#)

D. Draguljic, David C. Woods, A.M. Dean, S.M. Lewis, A.E. Vine

#### [A Covariance-Based Test For Shared Frailty In Multivariate Lifetime Data](#)

Key issues

Preservation  
Presentation  
Promotion

Service  
integration  
Personal profiles

# Full personal profile

## Jonathan Bull

BSc, PhD

Primary position: Faculty Associate Dean (Research)  
Other positions: Professor

Background Publications Research Responsibilities Teaching Contact

BSc (Honours) Geology and Geophysics, University of Durham (1987)

PhD Marine Geophysics, University of Edinburgh (1990)



## Jonathan Bull

BSc, PhD

Primary position: Faculty Associate Dean (Research)  
Other positions: Professor

Background Publications Research Responsibilities Teaching Contact

The University of Southampton's electronic library (e-prints)

### Article

Nixon, Casey, Sanderson, David J. and Bull, Jonathan M. (2012) Analysis of a strike-slip fault network using high resolution multibeam bathymetry, offshore NW Devon U.K. *Tectonophysics*, 541-543, 69-80. (doi:10.1016/j.tecto.2012.03.021)

Cowie, Patience A., Roberts, Gerald P., Bull, Jonathan M. and Visini, Francesco (2012) Relationships between fault geometry, slip rate variability and earthquake recurrence in extensional settings. *Geophysical Journal International*, 189, (1), 143-160. (doi:10.1111/j.1365-246X.2012.05378.x)

Bell, Rebecca E., McNeill, Lisa C., Henstock, Timothy J. and Bull, Jonathan M. (2011) Comparing extension on multiple time and depth scales in the Corinth Rift, Central Greece. *Geophysical Journal International*, 186, (2), 463-470. (doi:10.1111/j.1365-246X.2011.05077.x)

Gulick, Sean P.S., Austin, James A., McNeill, Lisa C., Bangs, Nathan L.B., Martin, Kylara M., Henstock, Timothy J., Bull, Jonathan M., Djajadihardja, Yusuf S. and Permana, Haryadi (2011) Updip rupture of the 2004 Sumatra earthquake extended by thick indurated sediments. *Nature Geoscience*, 4, 453-456. (doi:10.1038/Ngeo1176)

Direct clickable link from metadata to full item  
in repository, DOI and PMID  
Promoting variety of access routes and versions

# Service integration Group profiles

Home 

Research

Research themes


Projects

Publications

Seminars

Research centres

Contact us

Social Sciences Home 

University Home 

## Social Sciences: Sociology, Social Policy & Applied Social Sciences

Home | Research | Projects

### Research project: Your Space! Siblings and Friends project

This project is part of ESRC Timescapes, the first major qualitative longitudinal study to be funded in the UK, involving five universities.

Currently Active: Yes

Project overview

Publications

Staff

Publications associated with this project from The University of Southampton's electronic library (e-prints):

#### Key Publications

Edwards, R. and Weller, S. (2011) Shifting analytic ontology: using I-poems in qualitative longitudinal research. *Qualitative Research* (In Press)

Edwards, Rosalind and Weller, Susie (2010) Trajectories from youth to adulthood: choice and structure for young people before and during recession. *Contemporary Social Science*, 5, (2), 125-136. (doi:10.1080/17450141003783298)

Edwards, Rosalind and Irwin, Sarah (2010) Lived experience through economic downturn in Britain - perspectives across time and across the life-course. *Contemporary Social Science*, 5, (2), 119-124. (doi:10.1080/17450141003783280)

Edwards, Rosalind and Weller, Susie (2010) A sideways look at gender and sibling relationships. In: *Siblings*

Project profiles

# Promoting real time deposits

Live feed to plasma screen in foyer of Electronics and  
Computer Science



# Service integration Institutional profiles



# Research. Changing the horizon

- Search
- Home
- Research
  - Latest Research
  - Our Impact
  - Outstanding Academics
  - Doctoral Training Centres
  - Research Centres
  - Support for research staff
  - Research Facilities
  - Business and Enterprise
  - Multidisciplinary Research
  - Research Directory
  - Research Programmes
  - RAE 2008
- Visit Us

[Home](#) | [Research](#)

Research represents the lifeblood of the University of Southampton. It powers everything we do, from our innovative teaching methods to our growing portfolio of spin out companies.



Like 18,133



## Latest Research

Spotlight on some of the [groundbreaking research](#) that is currently being carried out across our eight faculties.

[New Boundaries](#)

## ePrints Soton

[Search our research repository](#) of journal articles, books, PhD theses, conference papers, reports, art exhibitions and more.

[Research Directory](#)





# Open Data Service beta

Sc

Open Data Homepage

5★ Data

Frequently Asked Questions

Apps

Data Catalogue

Places

Phonebook

Academic Programmes

Organisation

Research Facilities

Jargon

Points of Service

Products & Services

Bus Routes

SPARQL Endpoint

Feedback

Suggestions

University of Southampton > Open Data > Datasets > EPrints Repository

Share

## Dataset: EPrints Repository

<http://id.southampton.ac.uk/dataset/eprints>

Research outputs of the University of Southampton. Does not currently include all items from ECS which are available from <http://eprints.soton.ac.uk/>

**Homepage:** <http://eprints.soton.ac.uk/>

**Is a:** EPrints Repository, Authoritative Dataset.

**License:** <http://purl.org/openorg/NoLicenseDefined>.

**Conforms to:** Research Publications Repository, 4 Star Open Data.

**Published by:** University of Southampton

**Corrections for this dataset:** Not specified, but please contact [Christopher Gutteridge](#) with any issues.

### Available Distributions

**EPrints.soton OAI-PMH2 Endpoint**

<http://eprints.soton.ac.uk/cgi/oai2>

**RDF (in Turtle)**

<http://id.southampton.ac.uk/dataset/eprints/latest.ttl>

**Other Files Used In Publication Process**

(not available for download)

• [to\\_triples](#)

(not available for download)

• [incoming.n3](#)

Linked Data

## Linked services

Repository as record of publications integrated into

- Research management system with synthesised profile of grant income, research students, citation metrics
- Promoting and verifying publications for REF
- Export to RCUK Research Outputs System
- Export to populate CVs, grant proposals

All help engagement which in turn incentivises open deposits